



FLAME DETECTOR

INSTANT FLAME DETECTION FOR THE HOME

FlameDetector.com

The First REAL Change in Fire Detection in Over 60 Years.

Fire detection in the home hasn't changed much since the 1960s - until now.

Welcome to a whole new level of fire protection.



Patents Pending

WELCOME

Designed for spaces where a flame should never be, **Flame Detector is the only product of its kind**. Flame Detector can detect a flame immediately, alarm and send your phone a notification telling you a flame is being detected in the location you assign using the Flame Detector app (Android and iOS).

In general, you can expect a flame from a match or lighter to activate Flame Detector in 2 seconds or less from around 20 feet away!

Our objective is to prevent tragedies with a beautifully designed product that DOES NOT use cameras or microphones, further, it does not track or monitor user locations and only collects data related to its primary function of detecting flame. This data is used to improve the performance of the Flame Detector device and to provide better support to users. It is not sold to third parties or used for any other purpose.

OUR TEAM

**SCIENTISTS +
ENGINEERS =**

**100+ YEARS
OF COMBINED
EXPERIENCE**



FLAME DETECTOR

QUICK SET-UP

Follow these steps to quickly get your Flame Detector connected to your Network –

- 1 Read this guide and familiarize yourself with all the Flame Detector features and helpful insights on location selection and mounting.
- 2 Make sure you have a good Wi-Fi signal, download the app (available for iOS and Android) and register for first time users or login for already-registered users.
- 3 Access and tap 'Devices' from the app's main menu, then tap the '+' symbol to add your Flame Detector. Watch the short in app video on how to add batteries and press the Flame Detector gray set up button (you'll need your Wi-Fi network password).

Note: Before proceeding, ensure that the green indicator lights on your Flame Detector are flashing green and only tap the "The Green Lights Are Flashing" button once this condition is met.

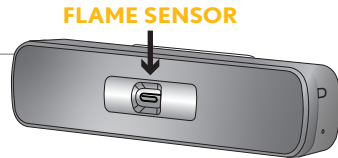
Once your Flame Detector is successfully connected to your Wi-Fi network, Flame Detector will announce 'Successfully connected to your Wi-Fi network'. Test your Flame Detector functionality using a lighter or match (see Testing and Maintenance) and if you choose, add others (Fire Commanders) to be notified when Flame Detector sees an issue. See adding Fire Commanders herein.

ROOM SELECTION + LOCATION

The best kind of room for Flame Detector is one where you never want a flame. Examples include children's bedrooms (curious kids start thousands of bedroom fires every year resulting in hundreds of deaths and millions in property loss), playrooms, bonus rooms, laundry rooms, workshops, craft rooms and even some garages.

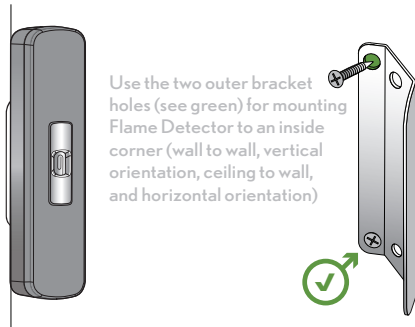
To position Flame Detector, the flame sensor should be exposed to as much of the room as possible. If the flame isn't exposed to the flame sensor, the flame will not be detected. Flame Detector has about a 130-degree field of view so corner mounting in the room often can work well.

Unlike traditional smoke alarms, Flame Detector doesn't necessarily have to be mounted on the ceiling. Choose a spot that offers the broadest view, from the perspective of the flame sensor, of the room. Remember, children playing with fire often ignite bedding so be sure this area of the room is seen by Flame Detector. Also remember that Flame Detector should be mounted high enough to keep out of reach of little hands. Because Flame Detector sends instant notifications to smart phones using your Wi-Fi network, a good Wi-Fi signal in the room is critical.

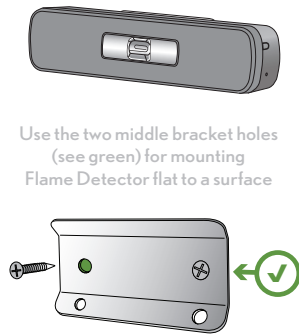


MOUNTING + POSITIONING / 3 FLEXIBLE METHODS

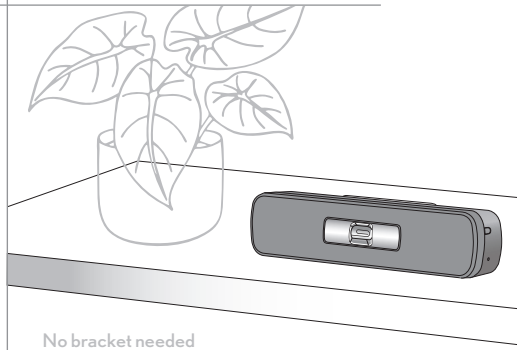
1 INSIDE CORNERS



2 FLAT TO WALL



3 SHELF



ASSIGNING + NAMING YOUR FLAME DETECTOR

During setup, you'll be asked to name your Flame Detector. **We suggest you provide a name that informs you of the location where Flame Detector is when a flame is detected.**

For example, if you add a Flame Detector to Johnny's bedroom, naming it 'Johnny's bedroom' during setup will result in a push notification to your phone that reads like this once a flame is detected –

**“Johnny's bedroom Flame Detector sees a dangerous flame.
Take immediate action.”**

You can also invite others to receive push notifications.



FIRE COMMANDERS

Besides yourself, **you can add other people that will receive push notifications.**

We call them Fire Commanders and to add them is easy:

- 1** From the Flame Detector apps home screen, select 'Fire Commanders'.
- 2** Select the '+' button on the bottom of the screen to add a Fire Commander.
- 3** Type the name and email address of the person you are inviting, then tap the 'Send Invitation' blue button.

An email invitation will be sent to the provided email address, offering them the option to accept the invitation.

Once they accept the invitation, they become a Fire Commander and will start receiving push notifications in real-time whenever a flame is detected by Flame Detector. This feature ensures that your trusted individuals are well-informed and can take immediate action.



CORDLESS CONVENIENCE / LONG-LASTING BATTERY POWER



With Flame Detector, you can say goodbye to ugly cords. **The three included AA alkaline batteries will power your Flame Detector for around a year.**

And the best part is you don't need to keep track of when to replace the batteries. You will receive a notification on your smart phone that the batteries need changing a couple weeks before they stop working. What's more, Flame Detector goes the extra mile by alerting you with a spoken 'Low Battery' message, but we designed that to be spoken only during daylight hours.

PREVENTION

While Flame Detector serves as an additional means of fire detection, it's essential to recognize that there's no substitute for preventing hazards in the first place. Fire safety begins with proactive measures, training, and compliance with fire codes.

Here are some fundamental practices to incorporate into a fire safety program —

- **Secure matches and lighters** — ensure they are out of reach.
- **Educate on fire safety** — teaching children about fire safety is critical. Instilling a strong understanding of the dangers of fire and how to respond in case of an emergency is a vital part of any safety program.
- **Install working smoke alarms per the latest code** — having functioning smoke alarms in your home is essential. These early warning systems can make all the difference in alerting you to a fire and giving you the precious moments needed to evacuate safely. **Flame Detector is not a life safety product, nor is it intended to replace smoke alarms.**
- **Access online resources** — the internet offers a wealth of resources and information on fire safety best practices. We strongly recommend adopting these guidelines and staying informed about the latest safety recommendations. Visit www.nfpa.org/publiceducation for more information.

LIMITATIONS

- **Flame Detector is NOT a substitute for smoke alarms.** Ensure that you have the required number of interconnected and operational smoke alarms as specified by your local codes.
- **Flame Detector has NOT undergone any independent evaluation or testing** as a life safety device. Smoke alarms, on the other hand, undergo extensive testing to comply with nationally recognized standards for life safety devices.
- Flame Detector's effectiveness relies on an unobstructed line of sight for its flame sensor to be exposed to the open flame within its detection range. If its view is obstructed or the flame is too far away, it will not be detected. Moreover, **Flame Detector does NOT detect smoke**, and it may also fail to detect a flame if the smoke is thick enough to obscure its vision.
- Flame Detector has limits to both range and field of view. A flame outside the field of view or range will not be detected. **A flame within its field of view or range that is obstructed by furniture, décor, person(s), smoke or the structure will NOT be detected.** For detailed information, refer to the 'Mounting + Positioning' section herein.

LIMITATIONS

- Some fluorescent lights and halogen bulbs may trigger Flame Detector's alarm. We strongly discourage the use of halogen bulbs due to the significant heat they generate.
- Glass acts as an effective filter for Ultraviolet (UV) light, which means **Flame Detector will not detect a flame behind glass**. This includes items such as a lit candle inside a glass jar, a gas fire behind a glass front, or flames viewed through a window.
- The size of the flame influences the amount of UV light emitted. In some cases, UV light can bounce off walls and other objects, potentially causing Flame Detector to sound an alarm, even if the flame isn't clearly visible to its flame sensor.
- **Flame Detector has not been evaluated for alarm loudness to any safety standards.** Whereas smoke alarms have required dB minimums, Flame Detector will not meet those.
- Smartphones have maximum limits on Push Notifications. Once exceeded, no others will be shown; users need to clear these phone notifications regularly.

TESTING, MAINTENANCE + TROUBLESHOOTING

Your Flame Detector periodically (about every 48 hours) checks in with our server to ensure all is well. For example, if your Flame Detector is unpowered or the sensor is not working, you will receive an actionable push notification if the condition persists.

Weekly testing is a must and it's simple. Walk into the space with a lighter and simply produce a small flame. Flame Detector will continue to alarm for as long as the flame is present. Doing this at different spots within the space will give you an idea of the coverage.

Flame Detector incorporates some sophisticated sensors that are fragile. Handle with care. Never use chemicals when cleaning your Flame Detector. Use a clean dry cloth to wipe any dust from the 'eye' and use a vacuum for the cloth face.

If you're experiencing any issues, please feel free to contact the toll-free number found in the 'Help' section of apps main menu.

WARRANTY

Forge Technologies warrants to the original purchaser that Flame Detector (but not the batteries) will be free from defects in material and workmanship or design under normal use and service for a period of one year from the date of purchase. The obligation of Forge Technologies under this warranty is limited to repairing or replacing the device or any part which we find to be defective in material, workmanship or design free of charge to the customer, upon sending the device with proof of date purchase, postage and return postage (USA only) prepaid to Forge Technologies Warranty Department, 2174 NC Hwy 56E, Creedmoor, NC 27522.

THE LIABILITY OF FORGE TECHNOLOGIES ARISING FROM THE SALE OF THIS PRODUCT OR UNDER THE TERMS OF THIS LIMITED WARRANTY SHALL NOT IN ANY CASE EXCEED THE COST OF REPLACEMENT, AND IN NO CASE, SHALL FORGE TECHNOLOGIES BE LIABLE FOR CONSEQUENTIAL LOSS OR DAMAGES RESULTING FROM THE FAILURE OF THE PRODUCT OR FOR BREACH OF THIS OR ANY OTHER WARRANTY, EXPRESSED OR IMPLIED, EVEN IF THE LOSS OR DAMAGE IS CAUSED BY THE COMPANY'S NEGLIGENCE OR FAULT.



Contains Transmitter Module FCC ID: 2AC7Z-ESPWROOM32D

This equipment has been tested and found to comply with the limits for a Class B digital device, pursuant to part 15 of the FCC Rules. These limits are designed to provide reasonable protection against harmful interference in a residential installation. This equipment generates, uses and can radiate radio frequency energy and, if not installed and used in accordance with the instructions, may cause harmful interference to radio communications. However, there is no guarantee that interference will not occur in a particular installation. If this equipment does cause harmful interference to radio or television reception, which can be determined by turning the equipment off and on, the user is encouraged to try to correct the interference by one or more of the following measures:

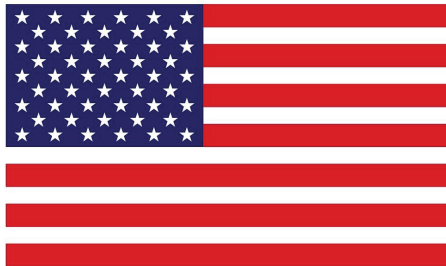
- Reorient or relocate the receiving antenna.
- Increase the separation between the equipment and receiver.
- Connect the equipment into an outlet on a circuit different from that to which the receiver is connected.
- Consult the dealer or an experienced radio/TV technician for help.

WARNING: Any changes or modifications made to the product without the permission of the manufacturer could void the user's authority to use the product. This device complies with part 15 of the FCC Rules. Operation is subject to the following two conditions: (1) This device may not cause harmful interference, and (2) this device must accept any interference received, including interference that may cause undesired operation.

Forge Technologies, Inc.

www.FlameDetector.com

info@flamedetector.com



DESIGNED & ASSEMBLED IN THE USA